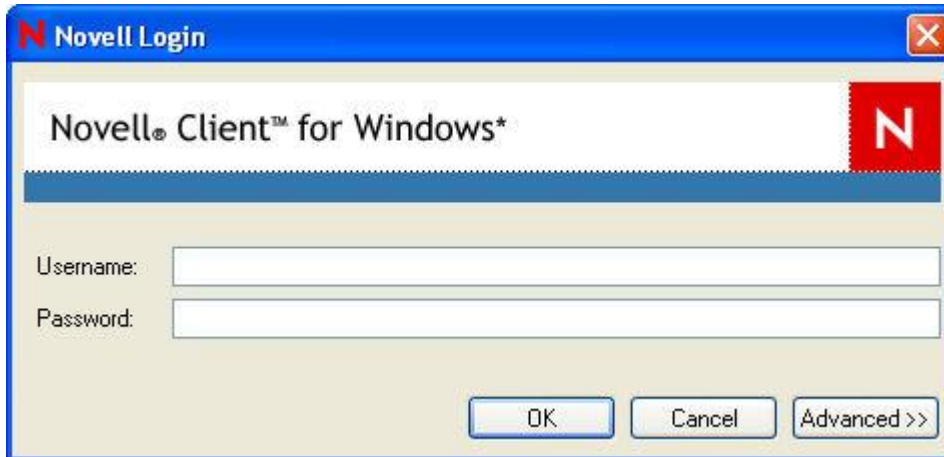
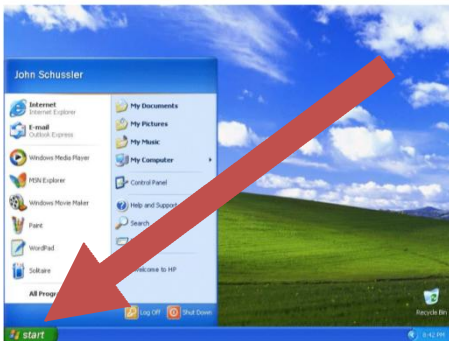


Directions for Accessing SMART Curriculum Lessons (Elementary)

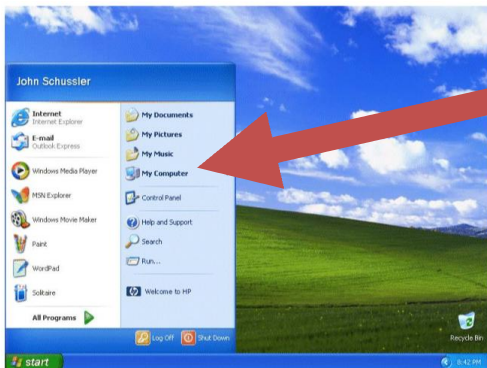
1. Log in to computers using Novell login and password.



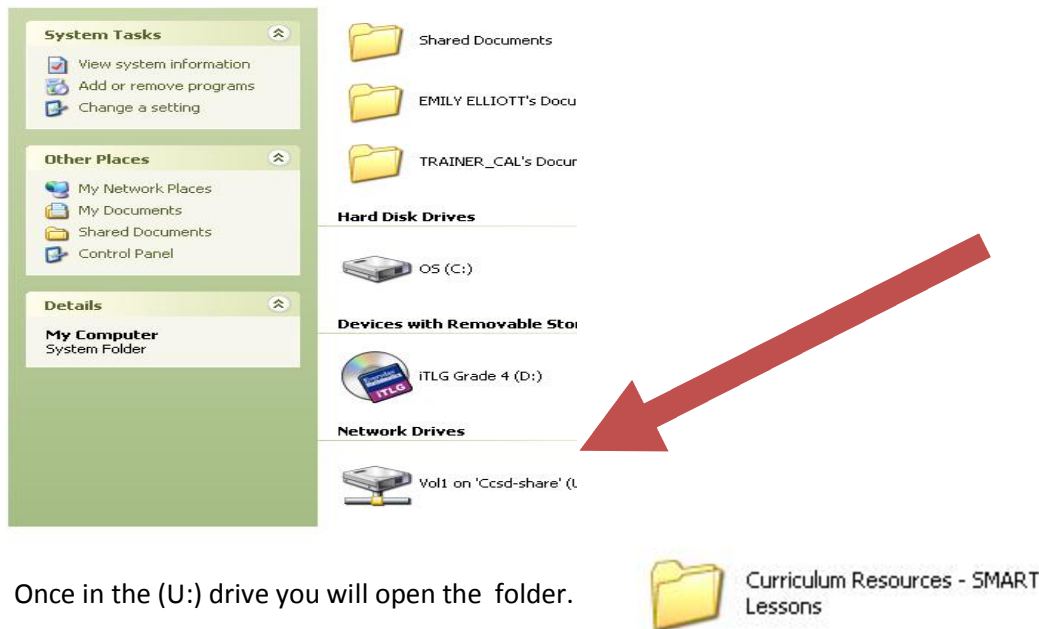
2. When looking at the Windows screen click on the Start Menu in the bottom left hand corner of the screen.



3. Once the Start Menu is open click on My Computer.



4. Once in My Computer look for Network Drive located near the bottom. The lesson folder is located in the (U:) drive.



5. Once in the (U:) drive you will open the folder.

6. This folder contains elementary, middle and high school folders. Each folder is broken in to grade level. Then the core curriculums can be selected; math, science, social studies and English language arts.

7. Lessons are organized by the standards for science and social studies, modules for ELA or units for Everyday Math. They can simply be opened from there. They open as "read only" files. If you would like to make changes to the lesson you will need to save the lesson in a different location such as your H: drive or flash drive.

***If you do not see the *Vol1 on 'Ccsd-share' (U:)* under My Computer:**

1. Try re-booting your computer
2. Make sure you are logged into the network, not just "Workstation Only"

If these trouble shooting tips don't work, please call the Helpdesk (308-8181) to request access to the *Vol1 on 'Ccsd-share' (U:) Drive*.

***If you should find an error or typo in any of the SMART Curriculum Lessons, please go to <http://www.surveymonkey.com/s/SMARTerrors> .**